



BATTERY POWERED,
CELLULAR GATEWAY
FOR SENSOR
MONITORING



DIGI CONNECT[®] SENSOR

Easy-to-install and roll-out ready, battery-powered cellular gateway solution

Digi Connect Sensor is a fully integrated, battery powered cellular gateway with I/O for connecting to a wide range of external sensors. Designed to work in rugged industrial environments, the sensor is the ideal solution for companies looking to add remote monitoring in places where power is not easily available. Its easy installation, reliability and low data usage make remote monitoring possible in areas where it was previously cost prohibitive.

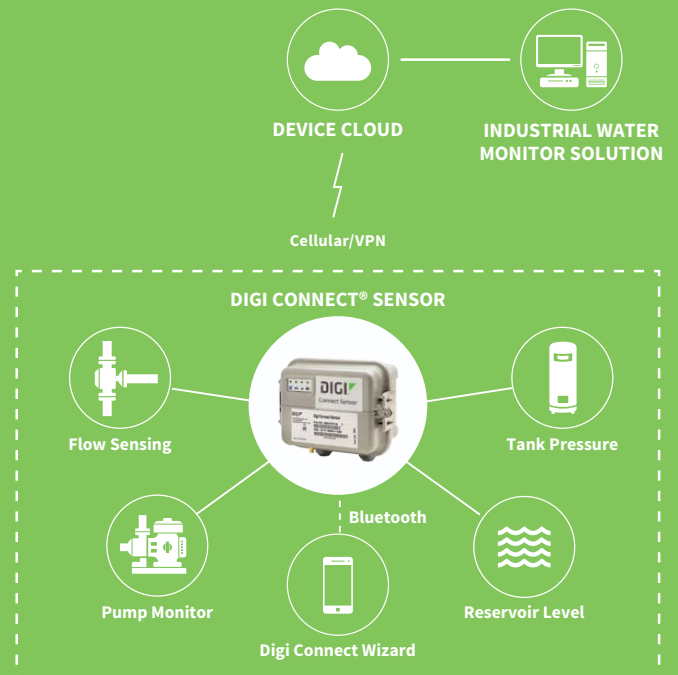
Digi Connect Sensor leverages Digi Device CloudSM and integration services, enabling customers who need to monitor large numbers of sensors to easily integrate that data into existing applications or work with third-party applications.

Digi Connect Sensor works with Digi Connect Wizard. This smartphone application is the first of its kind for this type of battery powered gateway. It gives local installers, technicians or drivers instant feedback of sensor values over Bluetooth. With this, local personnel get immediate status on an action, like filling a tank. This technology replaces the need for outdated LCD displays.

BENEFITS

- Weatherproof enclosure with wide temperature range makes it ideal for use in all environments
- Configurable read and report intervals with threshold and delta alarms
- Low cellular data usage that is consistent and predictable
- Multiple configurable I/O make it possible to connect to multiple sensor types
- External, configurable power outputs eliminate the need for sensor power supplies
- Penta band cellular module enables global connectivity
- Available with bundled cellular service

APPLICATION EXAMPLE



RELATED PRODUCTS



Digi Connect Tank



Digi Device CloudSM



Antennas and Accessories



Technical Services



Bundle Services

SPECIFICATIONS

Digi Connect® Sensor

WWAN	
CARRIERS	AT&T, Verizon international GSM carriers
2G BANDS	GSM 850, GSM 900, DCS 1800, PCS 1900
3G BANDS	FDD B1, B2, B4, B5, B8
LTE CATEGORY 1	Verizon: Bands 2, 4, 13 ATT: Bands 2, 4, 5 with 3G/2G fallback
ANTENNA CONNECTOR	External SMA
SIM SLOTS	1, Standard size
MANAGEMENT	
CONFIGURATION AND MANAGEMENT	Digi Device Cloud/Local USB to Serial CLI
COMMUNICATION PROTOCOL	TCP
POWER	
EXTERNAL POWER INPUT RANGE	8 VDC to 30 VDC
BATTERY AND BATTERY LIFE	7.2 V, 14.5 Ah, Lithium thionyl chloride, non-rechargeable, replaceable; Approximately 2 years (@ 2 reads/transmits per day)
POWER DRAW, SLEEPING	86.4 uW
POWER DRAW, PEAK TRANSMIT	14.4 Watts
ANALOG I/O	
INPUTS	4, Configurable as 4/20 mA or 0-10 VDC Analog inputs
INPUT VOLTAGE RANGE	0-10.5 V (Analog input)
INPUT CURRENT RANGE	4-22 mA (Current loop input)
DIGITAL I/O	
PORTS	1 digital I/O or pulse counter input
INPUT RANGE	0-0.6 VDC logic low; 2.2 V-30 VDC logic high
MAX INPUT VOLTAGE	30 VDC
MAX PULSE COUNT FREQUENCY	2 KHZ
DIGITAL OUTPUT	Open collector output, max sink current 450 mA
OUTPUT POWER	
PORTS	5
OUTPUT VOLTAGE OPTIONS	3.3, 5, 15, 24 VDC
MAX CURRENT OUTPUT	200 mA per sensor
ENVIRONMENTAL	
OPERATING TEMPERATURES	-35° C to +70° C
STORAGE TEMPERATURE	-40° C to +85° C
RELATIVE HUMIDITY	90%
BATTERY DISCHARGE	<1%/year if stored at +30° C
PHYSICAL	
DIMENSIONS (L x W x H)	152.4 mm x 108.4 mm (127 mm including glands) x 74.6 mm
WEIGHTS	264 g
LEDS INDICATORS	Battery, cellular, sensor and bluetooth
ENCLOSURE MATERIAL	Lexan
REGULATORY APPROVALS	
SAFETY	UL60950-1, CAN/CSA C22.2 No. 60950-1-01, IEC 60950-1:2005 (Second Edition); Am1:2009 + Am2:2013, EN 60950-1:2006 / A11:2009 / A1:2010 / A12:2011 / A2:2013 and EN 60950-22:2006; C1D2 (pending) ANSI/ISA 12.12.01-2013, CSA C22.2 No. 213-M1987
EMISSIONS	ATEX (pending) EN 60079-0:2012+A11:2013, EN 60079-15:2010, eII 3 G Ex nA nC IIC T6 Gc
IMMUNITY	FCC part 15 Subpart B class B, EN55022: 2010/AC: 2011 class B, IECs-003 Issue 5: 2012 class B
WARRANTY	EN55024:2010
PRODUCT WARRANTY	3 years, excluding battery

PART NUMBERS

DESCRIPTION

CSENSE-A700	Digi Connect Sensor, Global HSPA+
CSENSE-A200	Digi Connect Sensor, Verizon LTE CAT 1 (pending cert)
CSENSE-A300	Digi Connect Sensor, ATT LTE CAT 1 (pending cert)

DIGI SERVICE AND SUPPORT / You can purchase with confidence knowing that Digi is always available to serve you with expert technical support and our industry leading warranty. For detailed information visit www.digi.com/support.

© 1996-2016 Digi International Inc. All rights reserved.
All trademarks are the property of their respective owners.

91003268
A4/616

DIGI INTERNATIONAL WORLDWIDE HQ
877-912-3444 / 952-912-3444 / www.digi.com

DIGI INTERNATIONAL FRANCE
+33-1-55-61-98-98 / www.digi.fr

DIGI INTERNATIONAL JAPAN
+81-3-5428-0261 / www.digi-intl.co.jp

DIGI INTERNATIONAL SINGAPORE
+65-6213-5380

DIGI INTERNATIONAL CHINA
+86-21-50492199 / www.digi.com.cn

